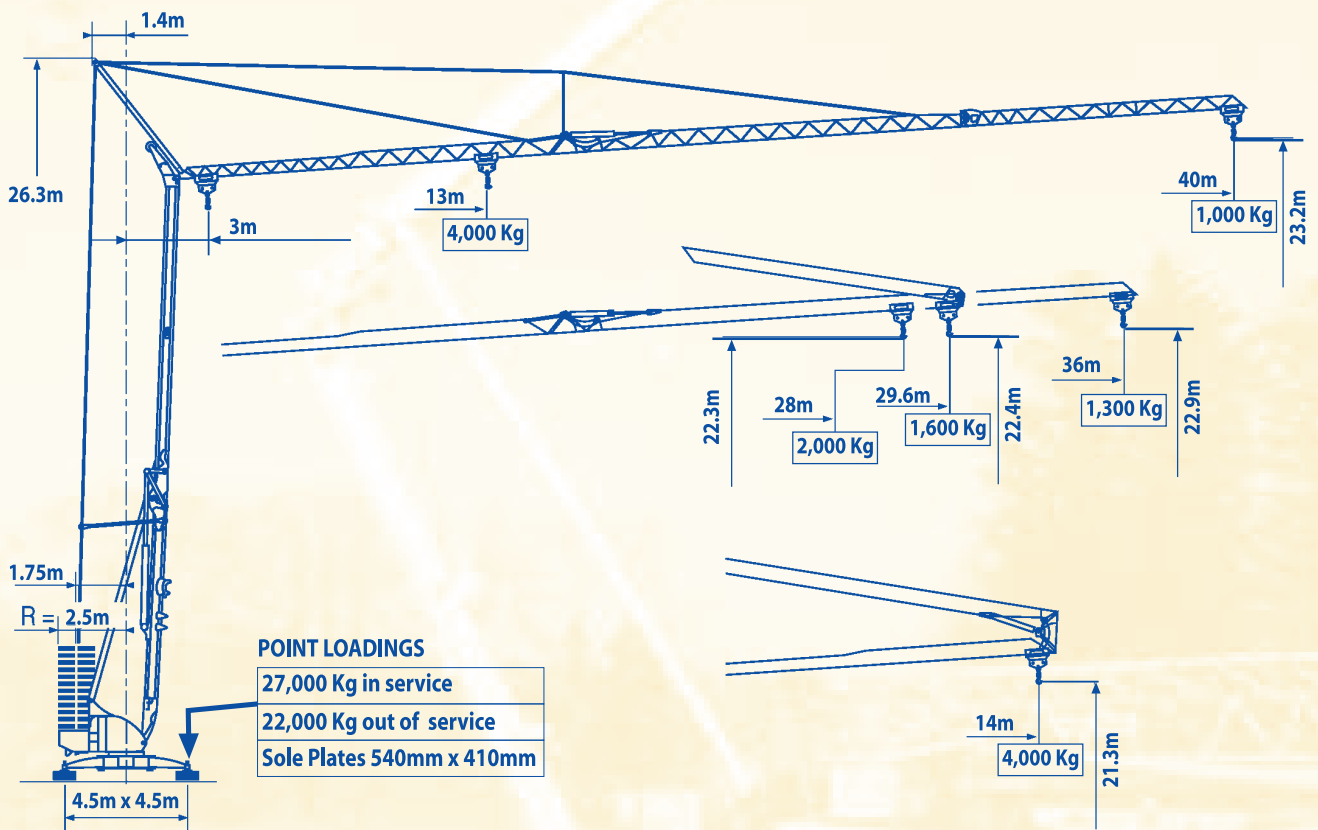
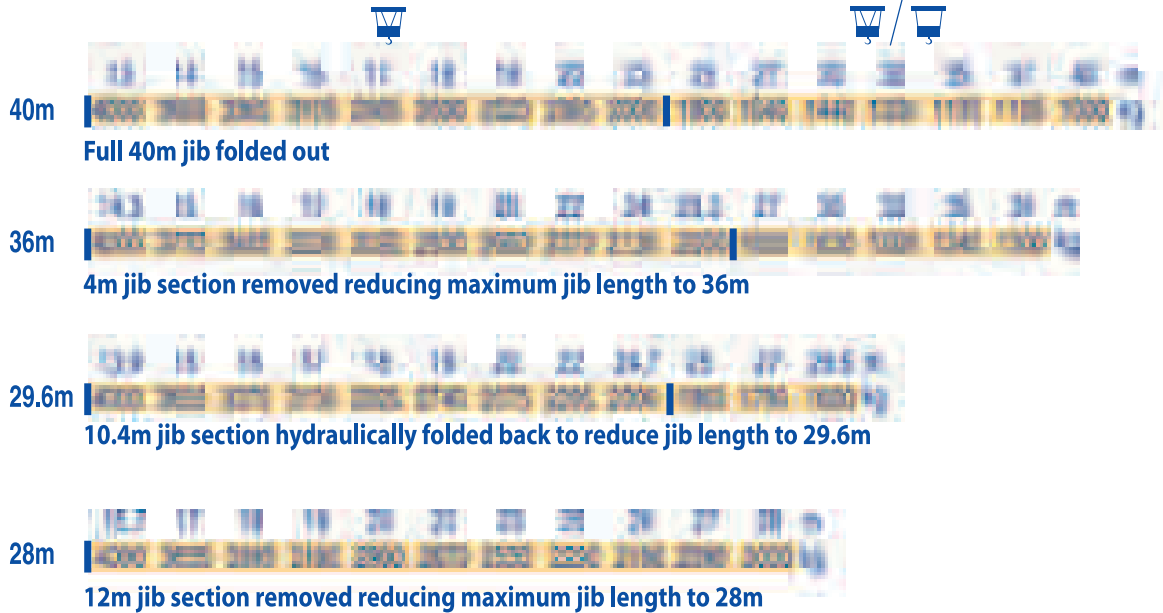


8° Incline	↑ 26.2m	2,000 Kg - Max. Lift
20° Incline	↑ 33.8m	1,100 Kg - Max. Lift





# Load Curves



 4 fall rope operation    
  4 fall or 2 fall rope operation



# Speed of Mechanisms

			4 fall rope operation					4 fall or 2 fall rope operation					PS lb	kW	
Hoisting	SLIPPER Cables	metric	3.6	18	30	48	66							11	11
		kg	3000	2000	2000	1100	300								
Trolleying	3 DVPS	metric	3.6	18	30	34	48	18	18	15	27	30			
		kg	3000	2000	2000	1000	300	4000	4000	4000	2000	1000			
Slewing	HYV-25	metric	18-40 (2 → 1000 kg)   18-44 (1000 → 4000 kg)										5	22	
			0 → 2.8										5.5	4	

Power Requirements		
Mains Electricity	kVA	Generator
400V (+6%-10%)50Hz	23 kVA	40 kVA

Subject to modification

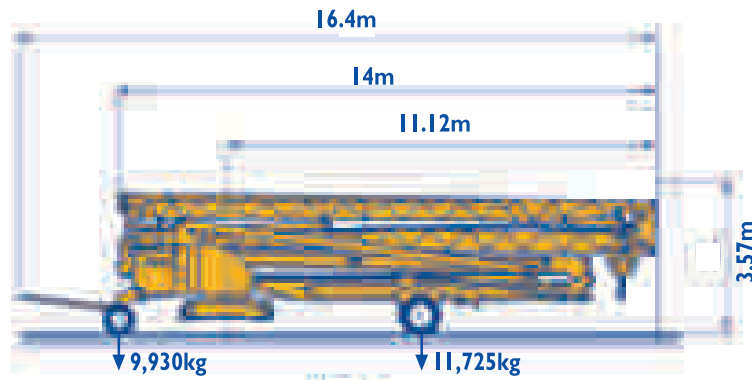


# Weights

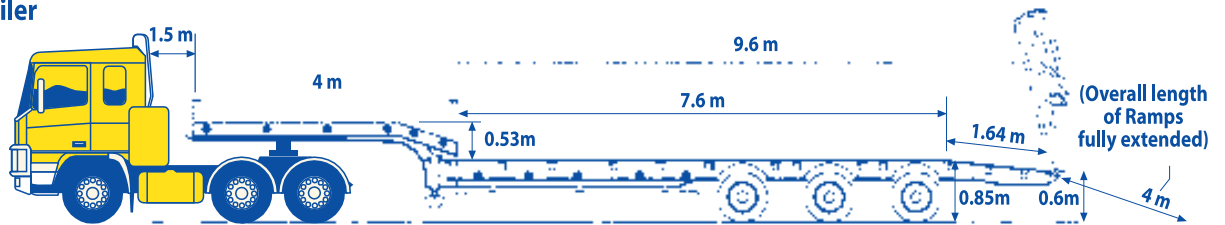
Dead Weight without Transport Axles & Permanent Ballast	15,000 Kg	<b>BALLAST WEIGHTS</b>	
Dead Weight with Transport Axles & 5,640kg Permanent Ballast	21,655 Kg	12 No. @ 1,900 Kg	22,800kg
		2 No. @ 2,820 Kg	5,640kg
		Total	28,440kg



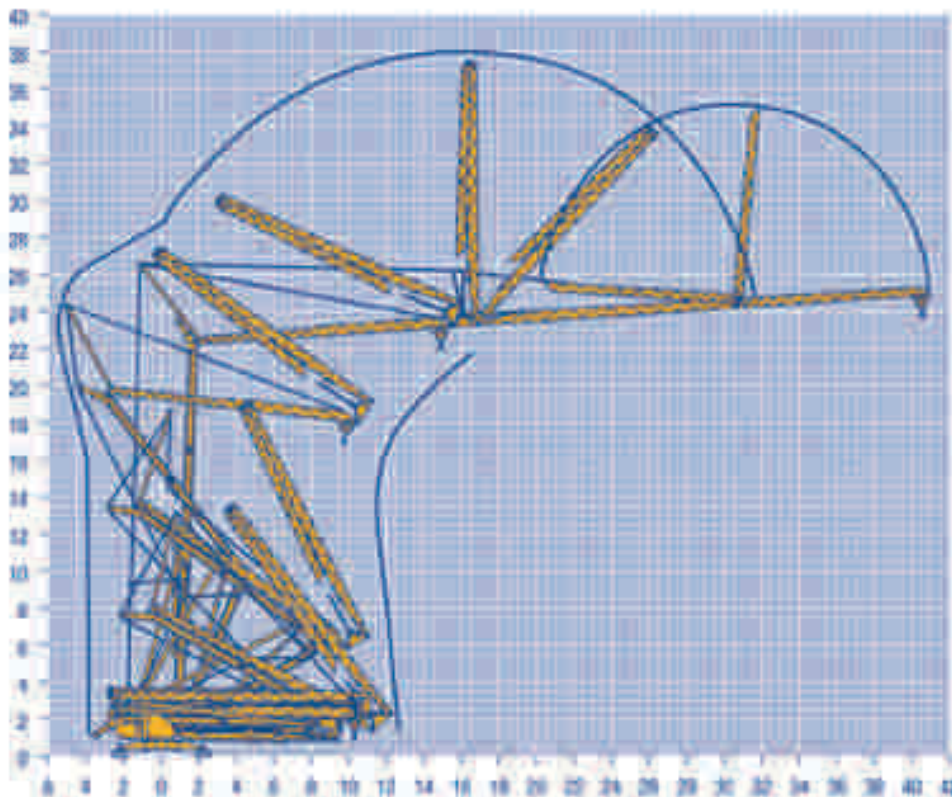
# Mode of Transport



Suitable Low Loader Trailer



# Erection Schematic





Model shown in picture may not be this actual model

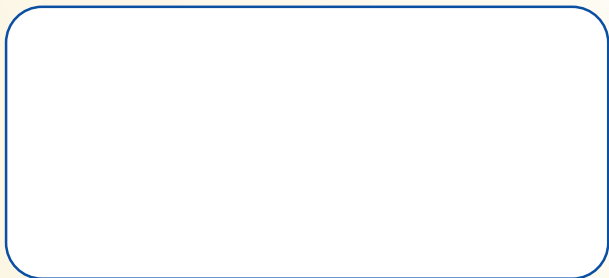
## On-site materials handling for the 21st Century



**Head Office**  
Killygordon  
Co. Donegal  
Ireland  
**Tel: +353 (0)74 9149981**  
**Fax: +353 (0)74 9149932**  
**Email: [info@mantiscranes.ie](mailto:info@mantiscranes.ie)**  
**Web: [www.mantiscranes.ie](http://www.mantiscranes.ie)**

**UK Office**  
Unit 11  
Brockwell Court  
Low Willington Industrial Estate  
Crook  
Co. Durham DL15 0UT  
**Lo Call: 0845 3098158**  
**Tel: +44 (0)138 8748962**  
**Fax: +44 (0)138 8748968**  
**Email: [info@mantiscranes.co.uk](mailto:info@mantiscranes.co.uk)**  
**Web: [www.mantiscranes.co.uk](http://www.mantiscranes.co.uk)**

This commercial document is not legally binding. Changes may be made to the content without any notification.



**'The Evolution in Crane Technology'**